



*Hope & Healing
Happen Here*



JOURNEY
HEALTH SYSTEM

ANNUAL REPORT 2022

www.journeyhealth.org



Who Is Journey Health System?

How We're Changing Lives...

Journey Health System is an affiliate network comprised of behavioral health companies staffed by 900 full-time and part-time individuals. The seven affiliates include six non-profits:

- Beacon Light Adult Residential Services (BLARS)
- Beacon Light Behavioral Health System (BLBHS)
- Deerfield Behavioral Health (DBH)
- Dickinson Center, Inc. (DCI)
- Forest Warren Mental Wellness Association (FWMWA)
- Stairways Behavioral Health (SBH)

and one for-profit entity that manages a unique "level-of-care" software tool:

- Deerfield Solutions

The Journey Health System Board of Directors include representatives from each of the member organizations. Together they deliver mental health care to a total of 22 counties across Pennsylvania.

As a 509(a)(3) nonprofit organization, Journey Health System functions as a supporting organization that takes the burden of managing administrative functions away from the affiliated behavioral health organizations to allow them to focus on their mission of providing excellent care.

Journey Health System is designed to ensure better outcomes for clients, families, and the communities served and allows for greater efficiency in the delivery of behavioral health services.

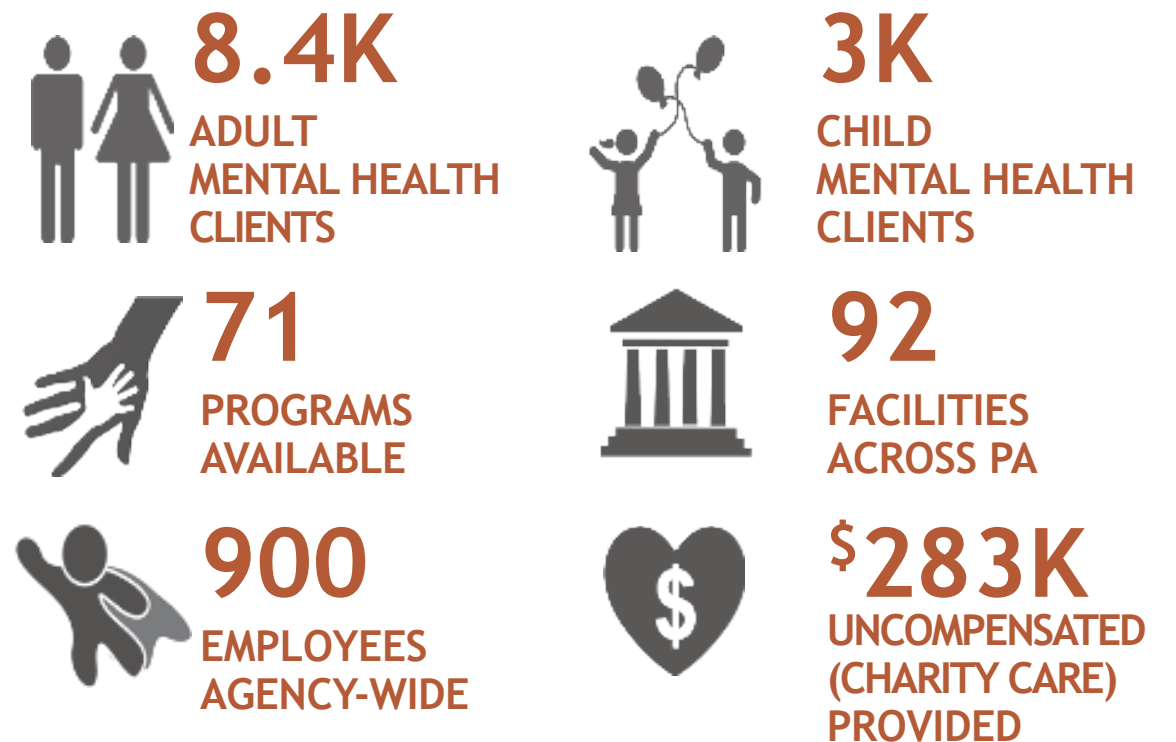
By being a part of Journey Health System, the administrative fees, ideas, and innovative best practices are shared among the group of affiliated companies. Millions of dollars are saved through bulk purchasing power, contract negotiations, and economy-of-scale advantages. This should make each affiliate organization financially stronger and more sustainable for the foreseeable future.

OUR MISSION IS TO SERVE YOURS.

OUR VALUES:

- COMMUNITY FIRST
- CLIENT CENTERED
- RESPONSIVE TO COMMUNITY NEEDS
- STRONG & RELIABLE
- LOCAL & CONSISTENT

Fiscal Year 2022 Affiliate-wide Reach Across Pennsylvania



22 COUNTIES SERVED



Table of Contents:

- Who Is Journey Health System? 2-3
- Board List & Leadership Message 4-5
- Beacon Light Adult Residential Services 6
- Beacon Light Behavioral Health System 7
- Deerfield Behavioral Health 8
- Dickinson Center, Inc. 9
- Forest Warren Mental Wellness Association 10
- Stairways Behavioral Health 11
- Serving Our Community 12-13
- Supporting Hope & Healing 14
- Honor Roll of Donors 15-17
- Journey Health System's Financials 18-19

Current Board Members

Journey Health System & Deerfield Behavioral Health

Anne Albright
 Peter Buchheit †
 Maurice Cashman
 Richard Esch
 David Ferguson
 Joseph Haines
 Craig Hartburg
 Andrea Hoffman
 Kathleen Jones
 Celene Kalivoda
 Gregory LaRocca
 Robert Saunders
 Dr. Tony Snow
 Thomas Tredway
 Joseph Yaros

Beacon Light Adult Residential Services

Dee Baxter
 Gretchen Brahaney
 Peter Buchheit †
 Karen Costello-Pecht
 Dr. Richard Dryden
 John Foerstner
 Jean Hvizdzak
 Brandon Means
 Mary Anne Polucci Sherman
 John Satterwhite

Stairways Behavioral Health

Nanda Chuwan
 Rosemari Graham
 Dr. Douglas Grisier
 Craig Hartburg
 Brian Hennessy, Esq.
 Kurt Hersch
 Andrea Hoffman
 Celene Kalivoda
 Gregory LaRocca
 Dr. Kristine Nelson
 Brandon Sieber
 Dr. Tony Snow
 Thomas Tredway
 Joseph Yaros

Beacon Light Behavioral Health System

Anne Albright
 Maurice Cashman
 William Chapman
 Christopher Clifford
 Kelly Compton
 Lori Peace
 Norm Strotman
 Cindy Zembryki

Dickinson Center, Inc.

Joseph Haines
 Bob Ordiway
 Abbi Peters
 Elena Radkowski
 Patricia Rosenstein
 John Schlimm
 Todd Stoltz
 Kara Vollmer
 Cindy Zembryki

Forest-Warren Mental Wellness Association

Kimberly Adams
 Karen Baker
 James Funkhouser
 Sue Kibbey
 Erica Kridler
 Gary Lester
 Eric Olson
 Jill Toto
 Patricia Rosenstein

† Deceased

This publication is dedicated in loving memory of the consumers, staff, board members & loved ones who we lost throughout the year. Your caring light will continue to shine everyday through our mission.

Message From The Board & Our President/CEO

Hope & Healing Happen Here...

Journey Health System and our affiliates are moving forward after the pandemic to meet the increasing mental healthcare needs of the communities we serve. We are pleased to see the pandemic waning so that our programs and facilities can resume semi-normal operations and hours.

The information highlighted in this book represents how much our organizational leaders and their staff devote their time and talents to helping others. We are doubling down on our efforts and innovations to provide additional support to individuals, children, and families who are facing challenges during this trying time.

This year, our affiliates aligned their missions by focusing on promoting mental well-being, including recovery from substance abuse/dependence. Through dozens of community outreach events and an increasing presence online and in the media, our team expanded awareness and shared resources regarding mental health with thousands of people across Pennsylvania.

Investments in workforce development and acquisition were expanded. By delivering more evidence-based trainings, technical assistance, and benefits for staff, we are helping our team of professionals develop their abilities and improve job satisfaction. Several of these initiatives were in response to our recent staff satisfaction survey.

There are not enough words to express our appreciation to our consumers, staff, board, and community for their contributions throughout the year. No matter how large or small, we truly appreciate everyone's support in furthering mental health and addiction treatments so **hope and healing** can happen here!



Gregory C. LaRocca
 Gregory LaRocca
 Board Chair



JOURNEY
 HEALTH SYSTEM



Guy C. Signor
 Guy Signor
 President & CEO



A 'go-to' place for residential care

Beacon Light Adult Residential Services (BLARS) prides itself on accepting and treating the most vulnerable adults with mental illness and intellectual disabilities. The BLARS management team and staff who work with our client population are always willing to be innovative and creative in treatment approaches so that individuals are afforded the opportunity to live the most productive, self-sustaining, and happiest life possible. BLARS offers both campus-based and community-based programs that give each individual an opportunity to thrive and participate in activities designed to facilitate independence and inclusion. The Community Stabilization and Reintegration Unit (CSRU), located in McClure, PA is a more structured, secure residential facility which aims to help dually-diagnosed individuals with a mental illness and an intellectual or developmental disability maintain their community-living lifestyle. Without this treatment, most of these individuals would be forced to seek a higher level of care in an institutional setting.

The community programs including, the Adult Day Services, Waiver Group Homes, and Community Residential Rehabilitation programs have all received recent compliments by our licensing bodies for the active treatment that clients receive from staff and the positive physical environments in which they work and live. Like many companies, BLARS has experienced staffing shortages, but the incredible dedication of the current staff has helped ensure an incredible level of care and treatment throughout the pandemic.

Lastly, BLARS has been asked to explore the possibility of Respite Care and/or Supported Living arrangements for difficult-to-place individuals with mental health issues. BLARS will continue to strive to be the 'go to' agency to treat this ever-expanding need.

For more information about BLARS, visit www.beacon-light.org.



Focusing on care for the future

Beacon Light Behavioral Health System (BLBHS) delivers high-quality behavioral healthcare to children and adults residing in some of Pennsylvania's most rural areas. Services include Prevention, Ambulatory (in home and in the community), Site-based, and Residential programs. While maintaining a focus on individual recovery, resiliency, and empowerment, BLBHS takes pride in being a designated Certified Trauma Informed Care Provider.

Over the past year, BLBHS successfully transitioned the Decision Support Center program from the Forest Warren Mental Wellness Association to BLBHS in Warren. The program has been very well supported by clinic consumers who are participating on a regular basis. Additionally, this transition allowed the implementation of the Decision Support Services to be implemented within the Warren County Prison. The Decision Support Center lets clients take an active role in tracking their own medication management and recovery journey to ensure their psychiatric appointments are effective and progressive.

BLBHS also successfully received licensing in multiple programs and was granted expansion opportunities to offer Community and School Based Behavioral Health (CSBBH) services at Otto Eldred Elementary and Phillipsburg-Osceola Middle School.

Future strategic goals will result in BLBHS becoming the service provider of choice for consumers and the employer of choice for potential employees.

For more information about BLBHS, visit www.beacon-light.org.





Expanding expert care for all ages

Deerfield Behavioral Health (DBH) is one of the largest groups of behavioral healthcare providers in Pennsylvania. DBH employs a full spectrum of clinical experts including Psychiatrists, Certified Registered Nurse Practitioners, Physician Assistants, Psychologists, Licensed Clinical Social Workers, Licensed Professional Counselors, and support staff. DBH offers a unique blend of diagnostic, therapeutic, and contract behavioral health services for both children and adults. Services include outpatient psychiatric care and mental health therapy, tele-health services, addiction treatment, and psychiatric contracting services.

A unique new service was launched this year called Transcranial Magnetic Stimulation (TMS). TMS is a new FDA-approved, cutting-edge approach to treatment-resistant major depressive disorder and obsessive compulsive disorder.

Additionally, DBH began implementing therapy groups in the Warren County Jail. DBH was also awarded the PA Department of Correction's Re-entry Substance Abuse Contract for Warren County, which will serve parole clients. To manage the increasing number of referrals and caseloads, jail services, and additional group offerings, a new therapist was added for Deerfield Centers for Addictions Treatment (DCAT) services.

DBH is looking forward to implementing the new American Society of Addiction Medicine criteria, which will enhance the quality of services provided in the DCAT program. The new DCAT Director is fully credentialed and all therapists in the program are currently going through the credentialing process.

For more information about DBH, visit www.deerfieldbehavioralhealth.org.



Increasing access to rural care

Dickinson Center, Inc. (DCI) and its team of nearly 200 employees provide behavioral health services to those individuals living with intellectual and developmental disabilities. DCI also offers children's prevention services throughout rural northwestern Pennsylvania. DCI continuously strives to recruit staff, retain existing staff, enhance the services that it provides, and improve operational efficiencies wherever possible.

A high priority for DCI has been to expand its current service region further into southern PA. Approximately 18 months ago, DCI successfully opened its Long-term Structured Residential (LTSR) facility outside of Brookville and added two new providers at the Lifesharing program in Elk County. DCI also celebrated its 10th anniversary in 2022 at the Servidea Drive location in Ridgway.

Recently, Brookville School District requested a proposal from DCI to provide mental health services within the schools. Additionally, DCI is currently working on starting its Lifesharing program in McKean County and has expanded its Mental Health Specialist program by adding a staff member in the Kane Area School District.

Within the next two years, DCI plans to construct a new building in downtown St. Marys, PA. This new structure will consolidate and centralize the outpatient services that are currently scattered across multiple locations in St. Marys. While the pandemic slowed initial progress, final architectural drawings and project plans are nearing completion. More information about the project can be found at <https://givetodickinson.org/st-marys-project>.

For more information about DCI, visit www.dickinsoncenter.org.





Moving ahead in Forest and Warren counties

Forest Warren Mental Wellness Association (FWMWA) is a consumer-driven company whose main vision is to assist adults in Warren and Forest counties in their recovery efforts from mental health issues. The agency has a variety of services that promote and focus on limiting the social stressors that often lead to poor mental well-being. These programs include assisting individuals with transportation to and from appointments and service providers, assisting with daily living skills, and offering safe and affordable housing through the Fairweather Lodges (which also has a strong employment/vocational skills component). Additionally, FWMWA offers a Representative Payee service to assist individuals with maintaining their finances and paying bills.

In November 2021, FWMWA's WellSpring Home and Garden store relocated to a new location on Market Street, next to Beacon Light Behavioral Health System's Recovery Center, in Warren. There have been a lot of activities associated with the store in hopes of maximizing foot traffic such as art shows, enhanced discounts on select items, and special events. Additionally, agency clients operate a landscaping and snow removal business throughout the Warren community.

FWMWA also initiated Community Based Care Management, a new program offered to adults in Forest and Warren counties who are enrolled with Community Care Behavioral Health. This program focuses on areas that cause life stressors and could potentially lead to people needing a higher-level of care if not addressed properly. FWMWA has identified transportation and homelessness as their future focal points. They have already aided multiple people with rent, utility vouchers, and trips to and from medical appointments. This program has proven to be a huge benefit to consumers in the Forest/Warren area.

For more information about FWMWA, follow @ForestWarrenMentalWellness on Facebook.



Partnering in the Erie region

Stairways Behavioral Health (SBH) reached 61 years of serving the Erie region. As the agency moves forward post-pandemic and through the ever-changing world, it has strengthened its commitment to serving the behavioral health and addiction recovery needs of the community. Under the direction of the Board of Directors, the SBH leadership team has developed a new strategic plan that will re-focus energies to enhance clinical excellence and growth, develop new service lines, support staff retention, and ensure financial sustainability.

SBH has embarked on an aggressive marketing campaign to help increase brand awareness for the organization and enhance recruitment and retention using television, social media, radio, and other forms of local advertising. With the help of Erie County and Community Care Behavioral Health, SBH was able to make improvements to some of its facilities, upgrade IT equipment for improved communication, and assist with programming.

Upcoming efforts include the Domestic Violence Intervention Program support group. Through a senior staff member's work with the Domestic Violence Action Alliance of Erie, SBH will be seeking a collaborative grant with Penn State Behrend. Also, SBH will strengthen its partnership with the American Heart Association through the "Transforming Communities through Policy, System and Environmental Changes" project with the implementation of a food insecurity screening and referral process at the Erie Outpatient Clinic. SBH also plans to team-up soon with the Erie United Methodist Alliance to provide safe shelter, basic necessities, and support for those who live at the margins of homelessness.

In 2022-2023, a Youth-in-Transition Fairweather Lodge for young adults, ages 18-26, is expected to open. SBH will be the only provider in Erie to offer this new service.

For more information about SBH, visit www.stairwaysbh.org.



Bringing Hope & Healing to Our Community...

In fiscal year 2022, all of Journey Health System's affiliates stepped up and stepped out to increase awareness about mental healthcare resources, programs, and services available. Overall, our teams of professionals participated in nearly 100 events to assist consumers, staff, and the communities we serve.

Thank you to everyone for attending. We're excited to build on these community outreach opportunities in the year ahead.

If your organization needs a mental health presenter, please see our Speaker's Bureau list at www.journeyhealth.org/affiliates.html or call 814-817-1400 ext. 1425.



Beacon Light-SAP at Overdose Awareness Day



Beacon Light at Bradford's Holiday Parade



FWMWA WellSpring Home & Garden Flower Sale



Beacon Light-SAP Warren County Fair Display



Dickinson Center's Ridgway Consumer Appreciation Day 2022



Dickinson's National Disability Employment Awareness Month Employer Award



Deerfield at National APA Conference



Beacon Light's IBHS Staff at Bradford School Event



Beacon Light's STRIDE Kittanning Movie Theme Day



Stairways' Staff Step Challenge



Beacon Light's Board & Donor Recognition Dinner 2022



Dickinson Centers Team at AFSP Walk



Dickinson's Kindergarten Readiness Events



FWMWA WellSpring Home & Garden's Art Show



Stairways' American Heart Association Walk Team



JHS Dedication of Jean H. Bromeley Education Center



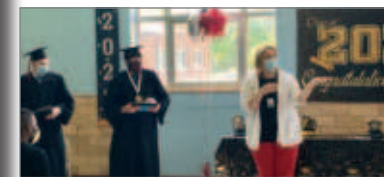
Beacon Light's IBHS Clearfield Team at Back-to-School Event



Stairways' Drug & Alcohol Staff Clinic



Dickinson's PAT Story Time Walk



Beacon Light's Custer City Private School



Dickinson's Psych Rehab Team at Potter County

JOIN OUR TEAM!
 Visit our Career pages at:
 - www.beacon-light.org
 - www.dickinsoncenter.org
 - www.journeyhealth.org
 - www.stairwaysbh.org

How YOU Can Support Hope & Healing

*Help Us Turn Our Vision Into A Reality
For Years To Come.*

Here Are Ways You Can Lend A Hand:

- Submit a gift payable to any of our affiliates using the enclosed envelope.
- Make a check payable to any of our affiliates & mail it to:
**Journey Health System
Attn: Institutional Advancement Office
800 East Main Street
Bradford, PA 16701**
- Make a donation by calling 814-817-1400.
- Make an online donation at:
 - www.givetobeaconlight.org
 - www.givetodickinson.org
 - www.givetostairwaysbh.org
- Join this special group of friends (visit the websites listed above for details):
 - Beacon Light- 1903 Founder's Society
 - Dickinson Center, Inc.- 1958 Founder's Society
 - Stairways Behavioral Health- Laura Wallerstein Stairways to Hope Society
- Follow our affiliates on Facebook & share our news with your friends.
- Volunteer or do an internship by contacting info@journeyhealth.org.

Thank You for Supporting Our Mission

The following pages list the key donors to each of Journeys' affiliates including: Beacon Light Behavioral Health System/Beacon Light Adult Residential Services, Stairways, and Dickinson Center from July 1, 2021 to June 30, 2022.

Your philanthropic support is no less valuable to our mission today than it was when each agency was founded. We couldn't offer our essential services without your help. Thank you!

Journey Health System gratefully acknowledges all of our generous benefactors. To the best of our knowledge, the information in our Annual Report accurately reflects our records. We recognize, however, that omissions or errors, while regrettable, inadvertently may occur. If you find any inaccuracies, please notify Institutional Advancement at (814) 817-1400.

BEACON LIGHT DONORS



BEACON LIGHT

Mr. & Mrs. Zane Albright
AmazonSmile Foundation
American Refining Group
Mrs. Lois A. Anderson
Jeff & Sara Andrews
Anonymous
Ms. Connie L. Barraclough
Dean Bauer
Mr. & Mrs. John W. Baxter
Dr. & Mrs. Widad Bazzoui
Mr. James W. Belardia
Between Four Walls
Mr. John Bloomstine
Cheryl & Greg Booth
Bradford Exchange Club
Mr. Thomas Bromeley
Mrs. Karen P. Buchheit
Mr. & Mrs. Maurice J. Cashman
Mr. William W. Chapman
Mr. & Mrs. James E. Cicuzza
Judge & Mrs. John M. Cleland
Close's Lumber Co.
Cochran & Zandi Lumber, LLC
Mr. & Mrs. Greg Davis
DeFrank Appliance
Dr. & Mrs. Richard Dryden
James H. Du Shaw
Ms. Jill Dunn
Lance & Debbie Eastman
Mr. & Mrs. Richard Esch
Dr. Lisa Fiorentino & Dr. K.J. Evans

Mr. & Mrs. David G. Ferguson, Sr.
Mr. John R. Foerstner
Reverend Leo J. Gallina
Mr. & Mrs. James S. Gelston
Jennifer Gesing
Mrs. Helen C. Goble
Mr. & Mrs. Jack Golden
Ms. Sandy Hamar
Mr. & Mrs. David M. Hannahs
Craig & Nancy Hartburg
Rev. & Mrs. Frank Hill
Holter Financial
Mr. Timothy L. Holter
Mrs. Jean V. Hvizdzak
Insurance Management Company
Italian-American Progressive Club
Mr. & Mrs. Brett Jensen
Mrs. Kathleen Jones
Ann Keane
Kessel Construction, Inc.
Mr. Richard L. Kessel
Kightlinger Motors, Inc.
Mr. & Mrs. John Kijowski
Kiwanis Club of Bradford
KOA Speer Electronics, Inc.
Mr. & Mrs. Tom Kornacki
Mr. & Mrs. Daniel B. Koza
Label Pack Automation
Mr. & Mrs. Gregory C. LaRocca
Mr. & Mrs. Brian Larson
Mr. & Mrs. Robert Marasco

Mr. & Mrs. David L. McInroy
Mr. & Mrs. Brandon Means
Miss Madeline Miles
Minard Run Oil Company
Minich Electric
Margaret R. Morgan
National Fuel Gas Distribution Corp.
Network for Good
Jeremy H. Norman
Ms. Elaine F. Northrup
Gina Nuzzo
Mr. Daniel O'Brien
Mr. Gerald W. Olshefski
Oneida Lumber & ACE Hardware
Philo & Sarah Blaisdell Foundation
Pittsburgh Foundation
Mr. & Mrs. John Policastro
Portville Dental, PLLC
Dr. & Mrs. Anil G. Pradhan
Mrs. Linda A. Rhone
Mr. & Mrs. John T. Rogers
Mr. & Mrs. Edward Rosenstein
Jeanie & John Satterwhite
Mr. Robert Saunders
Mr. & Mrs. William J. Sayers
Brett & Jeannine Schoenecker
Mr. & Mrs. Richard B. Seager
Mr. & Mrs. James H. Shannon
Mr. & Mrs. David Sheneman
Dr. & Mrs. Karl E. Shuey

continued from prior page...

Shults of Warren
 Mr. & Mrs. Guy C. Signor
 Mr. & Mrs. Frank P. Snyder
 State Line Supply Co.
 Mr. & Mrs. Norman M. Strotman
 The Benevity Community Impact Fund
 Dr. Kim Thurston
 Togi's Family Restaurant
 Mr. John Vanerstrom
 Vantage Care Apothecary
 Wendell & Nellie Wallace
 Ms. Pamela K. Walter
 Ms. Deborah J. Ward
 Wilt Tasta Pizza
 Mr. James Wiseman
 Mr. & Mrs. Donald E. Wismar
 Michael Wittmeyer
 Mr. & Mrs. Joe Yaros
 Mr. Andrew Young & Ms. Ruth Derby
 Ms. Cindy Zembryki
 Mr. & Mrs. Daniel M. Zinsner
 Zippo Manufacturing Co. &
 W.R. Case & Sons Cutlery Co.

Beacon Light is a 501 (c) 3 organization, contributions to which are tax deductible as permitted by law. The official registration and financial information of Beacon Light may be obtained from the Pennsylvania Department of State by calling toll free, within Pennsylvania, 1-800-732-0999. Registration does not imply endorsement.

To learn more about how you can make a contribution to Beacon Light, please call (814) 817-1400 or email at info@journeyhealth.org.

DEERFIELD BEHAVIORAL HEALTH DONORS

Mr. & Mrs. Raymond Miller, Jr.
 Mr. & Mrs. Harold F. Wiley

FOREST WARREN MENTAL WELLNESS ASSOCIATION DONORS

Gregory B. Fraser, Esq.

STAIRWAYS DONORS



Mary Anne Albaugh, MD & Dennis P. Borczon, MD
 Anonymous
 Mr. Frank Beachly, Jr.
 Ms. Laurie Bizzarro
 Marie Bongiorno
 Nathan Burt
 Ms. Julie Cohen
 Mr. & Mrs. Rick Cohen
 Ms. Dahlkemper & Mr. Lesser
 Mr. & Mrs. William G. DeWitt
 The Honorable Ernest DiSantis & Mrs. DiSantis
 Mr. & Mrs. Daniel Dowling
 Erie Community Foundation
 Fred's Furniture
 Fulton Athletic Club
 Ms. Barbara Gage & Mr. Andrew Laughland
 Mr. & Mrs. Michael Gage
 Mr. Kenneth Getschow
 Atty. & Mrs. Edward Goebel, Jr.
 Rosmari Graham
 Dr. & Mrs. Douglas B. Grisier
 Mr. & Mrs. Walter Harf
 Mr. John C. Harkins
 Mr. & Mrs. Steven Heitzenrater
 Mr. Brian P. Hennessy, Esq.
 Mr. Stephen Herbstritt
 Mr. & Mrs. Kurt Hersch
 Ms. Andrea Hoffman, MSN, RN
 Mr. & Mrs. David Holland, Esq.
 David Holland
 Lindsey Holland
 Celene Kalivoda
 Mr. & Mrs. Philip Kannenberg
 Mr. & Mrs. Bruce Kern, Sr.
 Dr. John & Pamela Knouse
 Koldrock Waters
 Mr. & Mrs. Christopher J. Komora
 Fr. Gerald J. Koos
 Mr. & Mrs. Gregory C. LaRocca
 Ms. Faith Lifshen
 Mrs. Mary Lincoln
 Marquette Savings Bank

Mr. Michael Richardson & Mrs. Virginia A. McDermott
 Ms. & Mrs. Brian McGrain
 Mr. Dennis P. McGuire
 Ms. Elynor J. McIntosh
 Mrs. Clemence R. Mershon
 M. J. Surgala Trust
 Mr. Craig Moffatt & Wendy Moffatt
 Ms. Donna Nicholas
 Ms. Mary Olivere
 Veronica A. Olszewski
 Mr. Richard & Benita Panighetti
 Mr. Tim Peterson, Sr.
 Ms. Barbara R. Pollock
 Ms. Helena M. Power
 Roth Marz Architects
 Ms. Patricia Rowley
 Ms. Karen Rzepecki
 Pamela P. Sagan
 Ms. Brenda Sanford
 Mrs. Lita Schaaf
 Mr. James Semple
 Mr. & Mrs. Brandon S. Sieber
 Mr. & Mrs. Guy C. Signor
 Mr. & Mrs. Michael Simon
 Ms. Florence D. Sinnott
 Dr. Tony Snow
 Society of Holy Trinity Group #240
 Mr. Edward G. Staab
 Mr. & Mrs. Robert F. Strazisar
 Mr. & Mrs. David Stubenhofer
 Dr. & Mrs. David Teufel
 The Britton Family Foundation
 The McCain Foundation
 Mr. & Mrs. Thomas Tredway
 Mr. & Mrs. David Trost
 William M. & Francis Schuster Fund
 Mr. & Mrs. William Ulrich
 Dr. Dennis Vidmar
 Mr. Larry Wallerstein & Ms. Sheila Garten
 Mr. Merle E. Wood

Stairways Behavioral Health is a 501 (c) 3 organization, contributions to which are tax deductible as permitted by law. The official registration and financial information of Stairways may be obtained from the Pennsylvania Department of State by calling toll free, within Pennsylvania, 1-800-732-0999. Registration does not imply endorsement.

To learn more about how you can make a contribution to Stairways, please call Institutional Advancement at (814) 817-1400.

Special thanks to those who supported Stairways Behavioral Health on Erie Gives Day 2022!

Please remember us during Erie Gives in August 2023 at www.eriegives.org.

DICKINSON CENTER DONORS

AJ & Sigismunda Palumbo Charitable Trust
 Always In Bloom
 Anonymous
 Mr. & Mrs. Gregory P. Bauer
 BPO Elks 872
 Mr. & Mrs. Paul A. Brazinski
 Mr. & Mrs. Wayne Bryndel
 Cream 'n Sugar
 Cully's, Inc.
 Mr. James Curtis
 Mrs. Deborah A. Dixon
 Domtar Paper Company
 Dubois Area United Way
 Elk County Community Foundation
 Fidelity Charitable: Bryndel Family Charitable Fund
 Mr. & Mrs. Donny Fleming
 Mr. & Mrs. Joseph K. Haines
 Haubors Jewelry
 HW Book Peddlers, LLC

Johnsonburg-Wilcox Area Community Fund
 Mr. & Mrs. Gregory C. LaRocca
 Mr. William Lorenzo
 Mr. & Mrs. Augustyn Macios
 Mama Made
 Moore Nutrition
 Dr. Veronica Kim Newsome & Mr. Timothy Stainbrook
 Mr. & Mrs. Robert A. Ordiway
 PNC Charitable Trust: Edith L. Trees Charitable Trust
 Mr. & Mrs. Guy C. Signor
 St. Marys Area United Way
 Stackpole-Hall Foundation
 Stoltz Family Dealerships
 Mr. & Mrs. Todd P. Stoltz
 Ms. Heidi Thomas
 Toyota Match Program
 Ms. Sharon Zuchowski



Dickinson Center, Inc. is a 501 (c) 3 organization, contributions to which are tax deductible as permitted by law. The official registration and financial information of Dickinson Center, Inc. may be obtained from the Pennsylvania Department of State by calling toll free, within Pennsylvania, 1-800-732-0999. Registration does not imply endorsement.

To learn more about how you can make a contribution to Dickinson Center, Inc., please call Institutional Advancement at (814) 817-1400.

Fiscal Year 2022

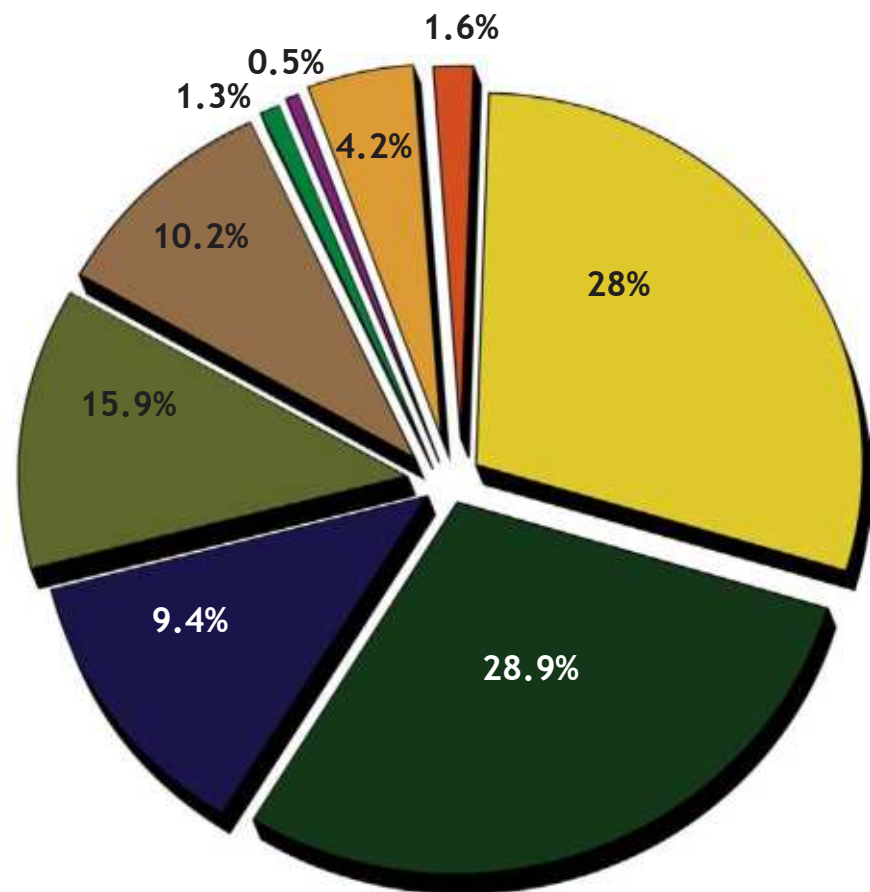
Revenues & Expenses

2021-2022 REVENUES



Stairways Behavioral Health	\$24,583,620	■
Beacon Light Behavioral Health System	\$25,375,004	■
Journey Health System	\$8,302,354	■
Dickinson Center, Inc.	\$13,946,672	■
Beacon Light Adult Residential Services	\$8,976,823	■
Forest Warren Mental Wellness	\$476,560	■
Deerfield Behavioral Health of Warren	\$3,699,539	■
Deerfield Solutions	\$1,131,637	■
Gage House	\$1,393,776	■

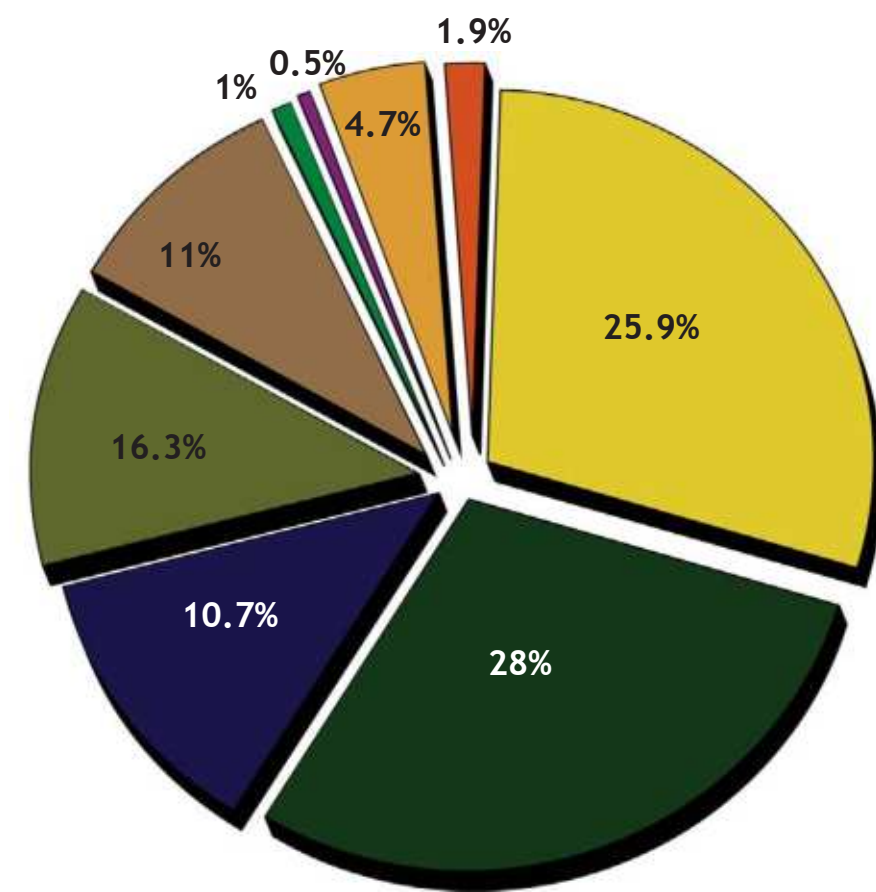
Total Revenue: \$87,885,985



2021-2022 EXPENSES

Stairways Behavioral Health	\$21,159,237	■
Beacon Light Behavioral Health System	\$22,908,042	■
Journey Health System	\$8,716,617	■
Dickinson Center, Inc.	\$13,283,961	■
Beacon Light Adult Residential Services	\$9,023,267	■
Forest Warren Mental Wellness	\$391,100	■
Deerfield Behavioral Health of Warren	\$3,824,083	■
Deerfield Solutions	\$872,916	■
Gage House	\$1,569,132	■

Total Expenses: \$81,748,355





JOURNEY  **HEALTH
SYSTEM**

800 East Main Street | Bradford, PA 16701
814.817.1400 | www.journeyhealth.org